

2-DAY GWAII HAANAS TOUR 2022 INFORMATION PACKAGE



*Thank you for choosing Moresby Explorers!
Please read through this important information before joining us on tour and don't
hesitate to reach out if you have any questions.*

THE TOUR:

Our 2-Day trip explores the northern half of Gwaii Haanas and the Louise Island area. We incorporate several stops, filling out our days with a mix of Haida cultural history, pioneer history, natural history, beautiful scenery, and as much wildlife as we can find. Our main stops include the ancient Haida village sites of K'uuna Lnagaay (Skedans) and T'aanuu Lnagaay (Tanu).



MAKE A BOOKING

Head to our website and select the date from our tour schedules that work best for you. Follow the prompts to initiate the booking online. If you have any questions that aren't answered in our FAQs or along the way, give us a shout! You'll need to provide a 25% deposit to confirm your spots and fill out a medical form to ensure the tour is suitable for you. You will need to read and understand our waiver before you sign it.

CANCELLATION POLICY

- If you cancel more than 120 days prior to the beginning of the tour we will refund the full amount.
- Between 120 days and 30 days, we will refund 75% of the total.
- Less than 30 days prior we will keep the full amount. No exceptions will be made.
- If we cancel your tour, for any reason, at any time, we will refund the full amount.
- Moresby Explorers withholds the right to cancel any transport or tour at any time due to adverse weather before or during a tour.

We suggest cancellation insurance. Some credit cards cover this for you, but if not it usually costs about 7% of the cost of the tour. Cancellation insurance covers you in case of illness or accident to you, a family member, or travelling companion, and in case of jury duty, but must be purchased prior to the purchase of the tour. If you would like us to hold off on taking the deposit until you get this insurance, please let us know.





HOW SHOULD YOU DRESS?

All our tours take place on open boats and therefore, it can be very cold and often wet. You should wear warm, layered clothing, preferably synthetic (like fleece) or wool, and, if possible, avoid cotton as it gets cold when wet. We suggest you bring all the warm clothing you have as you can always leave some in the van if your guide thinks you have too much. You should also bring a warm hat, sunglasses and gloves. You may bring your own rain gear, but we also provide heavy rain gear and gumboots for everyone. It is a good idea to wear your own raingear (jacket at least) underneath the heavy rain gear we provide. Then you can take off the heavy raingear while onshore but still have some protection from the rain.



GEAR LIST:

We have limited space in the boat so all your gear should fit in a small soft pack or duffel (~ 35L).

- Warm clothing!!
- Warm hat
- Sunglasses and ski goggles
- Gloves
- Scarf or face buff
- Water bottle
- Towel (and face cloth if you use one)
- Personal effects for one night
- Sturdy walking shoes or light hikers
- Bathing suit (optional, in case we go to hot springs or you want to swim)
- Camera (optional)
- Binoculars (optional)
- Sunscreen (optional)
- Snacks (optional)
- Alcoholic beverage (to have with dinner, optional)
- Gratuities (if our staff exceed your expectations, optional)



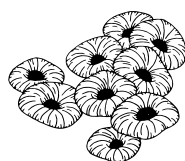


BAGGAGE NOTE

There seems to be an ongoing issue with "bumped" bags for people flying into Sandspit, which has caused some difficulty for our guests. If you are planning to arrive in Sandspit by plane the day before your tour starts, we highly recommend bringing the bag you plan to bring along on tour as your main carry-on bag, with any items in it that would be absolutely necessary for your overnight trip with us. That way, if your checked luggage does not show up when you get off your flight, you will still be able to join us for the tour without too much stress.

WHAT TO EXPECT ON THE TRIP

As discussed below, we start the trip by picking you up at your accommodation in Sandspit at 7:15 am or at the Alliford Bay Ferry landing around 7:45 am. We will be gone for two days and one night. We return in the evening on Sunday in time to catch the 5:30 pm ferry back to Skidegate. Note: Ensure you have any luggage you require for the ferry ride back to Skidegate and that you've parked your vehicle at the ferry before the trip. We cannot drive you to Sandspit and then back to the ferry.





WHAT YOU SHOULD KNOW ABOUT BOAT TRAVEL

Our boats are Zodiacs (rigid hull inflatables), which have a deep-V hull that allows them to cut through the water with minimal bouncing, and tubes around the sides provide stability. They are the most comfortable small fast boats around. However, the waters of the Hecate Strait can be unpredictable and choppy, which means the ride can be pretty bouncy, cold and wet. We usually spend one to two hours in the boat and then get off to walk around, stretch and explore. We rarely spend more than two hours in the boat at once, but occasionally we might be in the boat for as long as three hours if rough weather forces us to slow down. We have some dry storage under our seats, but it is quite narrow (about 10 inches), and gear stored under there is not available while the boat is in motion. If you are an avid photographer, we recommend having a dry bag to keep your camera equipment dry and accessible. If you have a smaller camera, you can put it in a plastic bag in the inside pocket of your jacket.



PICK UP LOCATION

- We can pick you up from one of three locations;
 - Your accommodation in Sandspit/Hlgaagilda at 7:15 am.
 - The Alliford Bay ferry landing around 7:45 am (As you come off the 7:30 ferry)
 - Moresby Camp at 9:00
- At the end of the day, we will either drop you off at your accommodation in Sandspit or we
- will drop you off to catch a ferry back to Skidegate/Hlgaagilda





ACCOMMODATION INCLUDED ON TOUR

Our home for the night is a small floating lodge with cozy double occupancy rooms, a sitting and dining area, and a large covered deck. There are two bathrooms with flush toilets, hot and cold running water - everything except a shower.

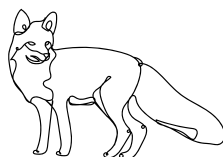
FOOD INCLUDED ON TOUR

We provide all of the meals from lunch day one to lunch day two on the trip, including snacks! Please let us know on the medical form if you have any dietary requirements.

We have a float camp cook who stays at the lodge for a few weeks at a time, hosting and cooking for the trips.



Note: Not exact meals pictured





MORESBY ISLAND/SANDSPIT INFORMATION

Sandspit is a small community of about 200 people and is the only community on Moresby Island. There is currently only one restaurant, a small but well-stocked grocery store, a post office, credit/debit card-operated gas station, and a thrift store that is open a couple of days a week. If you are looking for more information on what to do in Sandspit or on the islands, there is a Visitor Information Centre at the Airport - (250)637-5362. If you find yourself with extra time in Sandspit, you can go for a walk around the spit or rent a bike and go down to the Dover Trail.

TRAVELLING AROUND MORESBY ISLAND

Bike rentals

Available from the Sandspit Visitor Centre.

An excellent way to explore the area!

250-637-5362

Car rentals

There is one car rental company in Sandspit, and like the other car rental places on the island, car availability can be limited, so make sure you book ahead. Be sure to ask about their policies for unpaved roads if you plan to go to any sites off of the main highway.

Budget Rent-A-Car

Located at the Sandspit Airport

(250) 637 5688

Restaurants

Beaches at Northern Shores Lodge

Open Tuesday to Sunday 5 pm to 9 pm (Opening times vary)



ACCOMMODATION BEFORE / AFTER TOUR

SEAPORT B&B

Our B&B is located in Sandspit, just across the street from the beach. It is just three doors down from the Moresby Explorer's office and within walking distance to all the restaurants in town. Built in 2011, we have rooms with shared bathrooms, private bathrooms, a main bedroom with the best oceanview, and a private bathroom. All the rooms have both a queen and a single bed and include breakfast in the morning. We also have a shared luggage storage area and internet.

Contact our office to book. 1-800-806-7633 | (250) 637-2215 | www.seaportbb.com

MAADA'S NEST

House rental, or room rental. Great for families or groups, close to our office, and has a full kitchen and laundry.

379 Blaine Shaw Rd | (250) 637-2373 | www.airbnb.ca

BAYVIEW GARDENS B&B & HOSTEL

Beach front, beautiful garden, breakfast ingredients provided, guest use kitchen.

401 Beach Rd | (250) 637-5749 | Toll Free 1-800-306-6644 |
thebayviewgarden@gmail.com www.bayviewgardenbandb.com

MORESBY ISLAND GUEST HOUSE

Beach front, basic accommodation with private rooms and dorm style shared rooms for a reasonable price.

385 Beach Rd | (250) 637-5300

NORTHERN SHORES LODGE

Beach front, hotel style rooms with a communal space for reading and wave watching.

Pizza sold a few nights a week.

455 Beach Rd | (250) 637-2233

501 RV AND TENT PARK (POSSIBLY CLOSED FOR 2022)

Located on the main road in Sandspit, facilities include both tenting area and RV full service sites. Public laundromat and public showers open 9:00am to 9:00pm (longer for overnight guests).

501 Beach Rd | (250)637 5473 1rvpark@telus.net



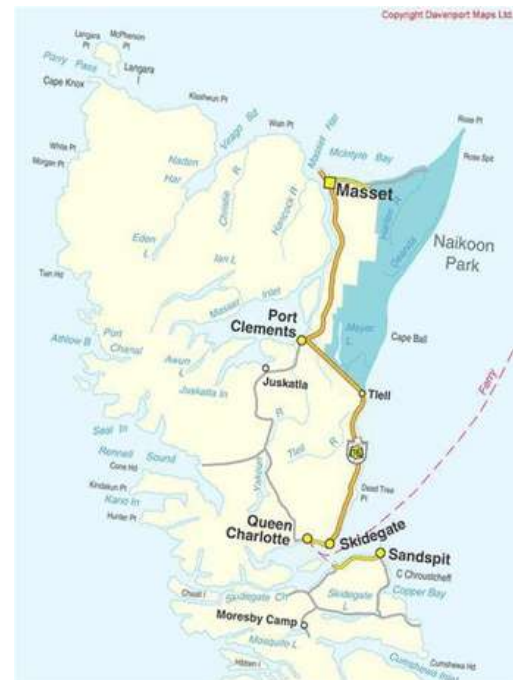


GRAHAM ISLAND INFORMATION

Graham Island hosts the communities of Queen Charlotte/Daajing Giids, Skidegate/Hlgaagilda, Tlell, Port Clements/Gaauu Kaahlii Lnagaay, Masset and Old Masset/Gaw in Xaad kil. Each of the communities has its own unique draw, and it is worth it to explore them all if you have time. In Queen Charlotte, you can enjoy the waterfront and unique shops. Skidegate is home to the Heritage Centre, which has some great Haida history.

Skidegate/Hlgaagilda also has some Haida Art galleries, gift shops, and food services. In Tlell, there is an artisan community and the start of the hike out to the Pesuta shipwreck. Port Clements/Gaauu Kaahlii Lnagaay is home to a comprehensive, although small, logging museum and the trail out to where the Golden Spruce stood. Masset has an airport that Pacific Coastal flies into and some great grocery stores and services. Old Masset/Gaw in Xaad kil has some art galleries and gift shops as well.

There is a great Visitor Information Centre in Queen Charlotte/Daajing Giids. They can answer your questions and help refer you to accommodations and operators that suit your needs. (250)559-8316 www.qcinfo.ca info@qcinfo.ca



TRAVELLING GRAHAM ISLAND

Travelling from one end of Graham Island to the other is not far, provided you have a vehicle. If not, there are several shuttle, taxi or car rental options, to help you explore!

Taxi Services:

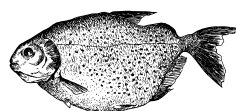
Gwaii Taxi and tours

Licensed taxi service for the communities of Skidegate/Hlgaagilda and Queen Charlotte/Daajing Giids. Larger groups can be accommodated with advance notice.

Ph: (250) 559-8622

stratton@haidagwaii.net

www.gwaitaxiandtours.ca





Car Rentals:

Budget Rent a Car

Weekly and Daily Rates available. Pick up at BC Ferries available.

605 Highway 33, Queen Charlotte (located in Charlotte Island Tire)

Ph: (250) 559-4641 Toll Free: 1-877-559-4641 After hours call (250) 559-4504

citires@qcislands.net

RESTAURANTS

There are many small cafes on the island that are open during the summer and many of them have great ocean views. This is not a complete list, but it gives some options of places that we enjoy frequenting.

QUEEN CHARLOTTE/DAAJING GIIDS:

OCEANVIEW RESTAURANT

301-3rd Ave, Queen Charlotte

(250) 559-8503

Open 7 days a week - 7am-8:30pm

Open 7 Days a Week

BLACK TAIL

Great food and drinks, with a small cocktail bar and outdoor covered deck.

Hours vary, check their website or facebook page

www.blacktailhaidagwaii.com

GATHER

Excellent Canadian food with an Italian twist. Mostly locally sourced food. Good vibes. outdoor covered deck.

Hours vary, check their website or facebook page

www.gatherfood.ca

SKIDEGATE/HLGAAGILDA:

JAGS BEANSTALK

100 Hwy 16 (Just past the Haida Heritage Centre)

specialty coffees, ice cream, breakfast lunches. Ocean view and outdoor seating.

(250) 559 8826

www.facebook.com/kaybistro?





TLELL:

CROW'S NEST COUNTRY STORE
Hwy 16
General Store/Cafe with snacks, treats
and baked goods.
(250) 557 4593

HAIDA HOUSE AT TLALL
2087 Beitush Rd
Excellent table d'hôte dinner menu.
Accommodation available. (250) 557-4600

PORT CLEMENTSGAAUU KAHLII LLNAGAAY:

GOLDEN SPRUCE MOTEL
2 Grouse St
Great place for breakfast
(250) 557-4325

YAKOUN RIVER INN AND PUB
117 Bayview Drive
Port Clements, BC
(250) 557-4440

MASSET:

THE GROUND GALLERY AND
COFFEEHOUSE

1599 Main St (250) 626 5251

MOON OVER NAIKOOON BAKERY

Tow Hill Rd
(250)-626-7737

OLD MASSETGAW IN XAAD KÍL:

HAIDA ROSE CAFE & ROASTER
Fresh roasted coffee beans, high speed internet, lunch specials and souvenirs.
415 Frog Street
(250) 626-3310





ACCOMMODATION ON GRAHAM ISLAND

There are lots of choices for accommodation on Graham Island. It is always good to book ahead of time because most places have 10 rooms or less. This is not a complete list, but we have received good feedback from guests who have stayed at these ones. For more ideas, look at the Queen Charlotte Visitor Information Page at qcinfo.ca.

QUEEN CHARLOTTE/DAAJING GIIDS & SKIDEGATE/HLGAAGILDA:

HECATE INN
321- 3rd Avenue, QC
(250) 559-8788
www.hecateinn.ca

JAGS BEANSTALK ACCOMMODATION
100 Hwy 16, Skidegate
(250) 559-8826
jagsbeanstalk@hotmail.com

SPRUCE POINT LODGE
Box 735, 609- 6th Avenue, QC
(250) 559-8234

PREMIER CREEK LODGE
310 1- 3rd Avenue, QC
(250) 559-8198

DOROTHY AND MIKE'S GUEST HOUSE (SWORD FERN INN)

This accommodation has self- contained suites with full kitchens, ensuite rooms and cottages.

3127- 2nd Avenue, QC
(250) 559-8439
doromike@qcislands.net





TLELL:

CRYSTAL CABIN
778 A Richardson Road
(250) 557-4383
Toll Free 1-866-557-4383

HAIDA HOUSE AT TLLAAL
2087 Beitush Road
1-855-557-4600
www.haidahouse.com
info@haidahouse.com

CHATEAU LAWN HILL
Self-contained cottage 19818 Highway
16 (250) 559-7786
ron.rowan96@gmail.com
www.chateaulawnhillcottage.ca

CACILIA'S BED & BREAKFAST
(250)557-4664
www.qcislands.net/ceebysea
ceebysea@qcislands.net

TOAD FARM GUEST HOUSE
Separate Guesthouse Available 35770
Hwy 16
(250) 557-4491
keith@toadfarm.ca
www.toadfarm.ca

SERENITY NOW! B&B
#40623 HIGHWAY 16
(250) 557-4646

PORT CLEMENTS/GAAUU KAAHLII LLNAGAAY:

GOLDEN SPRUCE MOTEL
(250) 557-4325
www.goldenspruce.ca
info@goldenspruce.ca

SMILLIE'S BED & BREAKFAST
Self-contained cottage 19818 Highway
16 (250) 559-7786
ron.rowan96@gmail.com
www.chateaulawnhillcottage.ca

MASSET

ALASKA VIEW LODGE
Tow Hill Rd (250) 626-3333
1-800-661-0019

RAPID RICHIE'S BEACH CABINS
#15901 Tow Hill Rd.
(250) 626-5472
www.beachcabins.com
lotsafun@beachcabins.com





TOW HILL

NORTH BEACH CABINS
15965 Road (250) 557-2415
www.northbeachcabins.com

ALL THE BEACH YOU CAN EAT CABINS
15831 Tow Hill Rd
(250) 626-9091
info@allthebeachyoucaneat.com
www.allthebeachyoucaneat.com

COPPER BEECH HOUSE
1590 Delkatla St. (Down by the docks in
Masset)
(250) 626-5441
cbh@copperbeech.com
www.copperbeechhouse.com

ADDITIONAL RESOURCES

Go Haida Gwaii - <http://gohaidagwaii.ca>
Love Haida Gwaii - <http://lovehaidagwaii.com>

Would you like to learn more about Haida culture and values before you visit? Check out the Haida Gwaii pledge: <https://haidagwaiipledge.ca/>

For any further questions please reach out to us:
email: info@moresbyexplorers.com
phone: (250) 637-2215 or 1-800-806-7633
website: www.moresbyexplorers.com

- **THANK YOU AND HAVE A GREAT TRIP!** -

